

Installation Process



Step 1: Layout

- Mark out joint locations.



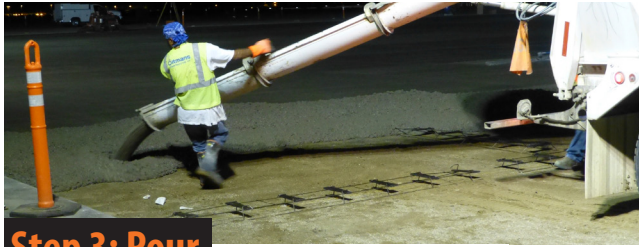
Step 2: Placement

- Place dowel cradles by centering the dowels over the paint lines within ± 50 mm.
- When placing cradles end to end, ensure adjacent dowels remain at the specified spacing.
- The last dowel in the cradle must be centred within 225 mm to 450 mm of the intersecting joint.



Step 3: Pour

- Pour the concrete to flow through and cover the cradles.
- Maintain cradle placement by placing your foot, or trowel, on the bottom wire of the frame during the pour.



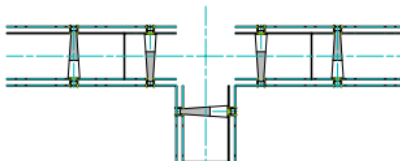
Step 4: Sawcut

- Sawcut the joint (1/4 of slab thickness) as soon as the concrete will support the saw and operator.

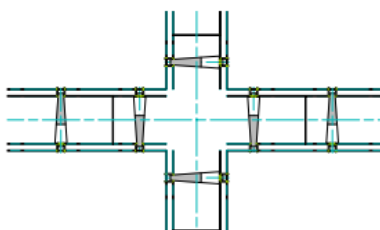


PD3 Dowel Cradle Positioning

3-Way intersection detail



4-Way intersection detail



Through Joints: equally space dowels at any cross-intersection

